

# The Clay County MOsaic

“Fitting the Pieces Together”

## P R E S I D E N T ’ S M E S S A G E

**INSIDE THIS ISSUE:**

|               |   |
|---------------|---|
| Info          | 2 |
| Feature Story | 3 |
| Adventures    | 5 |
| Donations     | 6 |
| Archives Info | 7 |

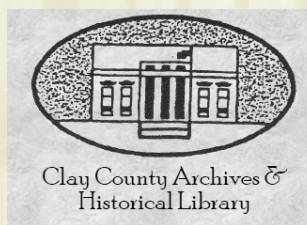


We are still processing court cases from the 19<sup>th</sup> century, both civil and criminal. One civil case even had, as a piece of evidence, a woman’s shoe to show where it got caught in a walkway and damaged. That poor woman not only had a spoiled shoe but she lost it to the “system” as it was retained for evidence!

Our informal speaker committee has been busy. We’ve given many speeches to local organizations on Francois Chouteau, our books, etc. Chris Harris has also been holding monthly talks of interest at the Museum and has hosted some walking tours for the City of Liberty.

We have finally replaced

our old microfilm reader/printer with a brand new one. It is a computer-based unit with many features and abilities beyond what we’ve had in the past. It will have a learning curve but, in the long



run, we’ll be much better off. Come check it out. Maybe you can teach us a few things about it!

The second Charisma Teachers Fair was held in Gladstone for educators to showcase what the local historical organizations can provide to our district classrooms.

The Annual Volunteers picnic was held in August at the Hughes Library Building. Jacki and Chadwick Oldham gave an interesting program of their exploits using metal detecting equipment to find long lost items of historical value.

Our Annual Membership meeting will be held at the Liberty Christian Church (427 E Kansas Street) on Saturday, December 5<sup>th</sup> at 10am. The program will be Keith Nelson speaking about “A tribute to the Chouteaus and the Francois Choteau and Native American Fountain”. Please come to enjoy the program and camaraderie as well as vote on the officers and board members for 2016.

~Stuart Elliott

### ANNUAL MEETING

CLAY COUNTY ARCHIVES & HISTORICAL LIBRARY  
 ANNUAL MEETING AND ELECTION  
 DECEMBER 5, 2015 10:00 A.M.—12:00 P.M.  
 Liberty Christian Church, 427 E. Kansas, Liberty MO

Keith Nelson will present the program:  
 “A TRIBUTE TO THE CHOUTEAUS & THE FRANCOIS CHOUTEAU AND NATIVE AMERICAN FOUNTAIN”  
 Please call the Archives at 781-3611 to make your reservation.

**2015 Executive Board**

**Officers**

|                         |                 |
|-------------------------|-----------------|
| President               | Stuart Elliott  |
| 1st Vice President      | Nancy George    |
| 2nd Vice President      | Shirley Fansher |
| Corresponding Secretary | Ann Henning     |
| Recording Secretary     | Donna Root      |
| Treasurer               | Scott R. Cole   |

**Directors**

|                     |                     |                     |
|---------------------|---------------------|---------------------|
| <u>Through 2015</u> | <u>Through 2016</u> | <u>Through 2017</u> |
| Raymond Brock       | Patricia Rendon     | Keith Nelson        |
| Bob Corum           | Steve Olson         | Joyce Schumacher    |

**Committee Chairs**

|                            |                 |
|----------------------------|-----------------|
| Records Use & Preservation | Nancy George    |
| Membership                 | Shirley Fansher |
| Properties                 | Bob Corum       |
| Cemeteries                 | Ken Neth        |
| Computer Use               | Stuart Elliott  |
| Volunteer Coordinator      | Jane Shepherd   |
| Ways & Means               | Tony Meyers     |

**Organizational Representatives**

|                                |                   |
|--------------------------------|-------------------|
| Clay County Historic Sites     | Beth Beckett      |
| Clay County Parks              | Emily Vandendaele |
| William C. Corum Chapter SAR   | Frank McMillian   |
| Clay Co. Patriots Chapter DAR  | Lois Long         |
| Alexander Doniphan Chapter DAR | Jerre Robertson   |
| City of Liberty                | Jonna Wensel      |

**Newsletter Staff**

Keenan Glidewell Barker  
Stuart Elliott

**General Information**

**Hours of Operation**

Monday through Wednesday—9 a.m. to 4 p.m.  
First Wednesday of Month—6:30 p.m. to 9 p.m.  
Closed on National Holidays

**Membership for Calendar Year**

Individual & Family (one address) - \$15.00  
(Memberships paid after October first will apply to next calendar year.)

**Benefits of Membership**

Unlimited *On-Site* Research  
Subscription to *The Clay County MOsaic*, our quarterly newsletter

**Research Policy & Fees**

Non-members pay \$5.00 per day for on-site research.  
Member and non-member research requests by mail are accepted. Each request must be accompanied by a self-addressed stamped envelope and an initial research fee of \$10.00 per surname for one hour of research. Additional hours are \$10.00 per hour.

**Copy Prices**

|   |                   |
|---|-------------------|
| Original records (such as probate material) | \$1/page          |
| Other published material                    | 15 cents per page |
| Microfilm printouts                         | 25 cents per page |
| Computer print-outs                         | 5 cents per page  |
| Oversize copies                             | 50 cents per page |
| Photographs                                 |                   |
| Standard Quality                            | 50 cents          |
| Archival Quality                            | \$5.00            |

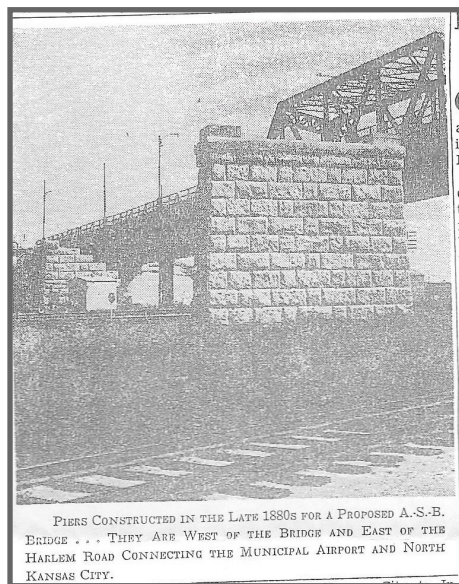
~ Personal imaging will be charged at the above rates ~

**MOsaic by Internet**

If you would like to receive your future newsletters via email, please forward your email address to: [MOsaic@claycountyarchives.org](mailto:MOsaic@claycountyarchives.org)

## ONE BRIDGE TOO MANY?

As a small boy of 5 or 6 I remember standing up in the front seat of the car looking out the passenger side window as we drove across the ASB Bridge headed to downtown Kansas City and noticing the big stone piers that seemed to serve no purpose. I asked my mom what those were and she said they were from an earlier bridge. That seemed logical and like all small boys I had learned that you should always believe whatever your mother says or be prepared to suffer the consequences. But I wanted to know more. At some point she explained that a Mr. Winner had started to build a bridge but ran out of money before he could finish it and those piers were left over from his attempt. I have no idea how she knew that since it happened when her own parents would have been very small children and they didn't live anywhere close. She must have read it somewhere.



Kansas City Times, August 31, 1954

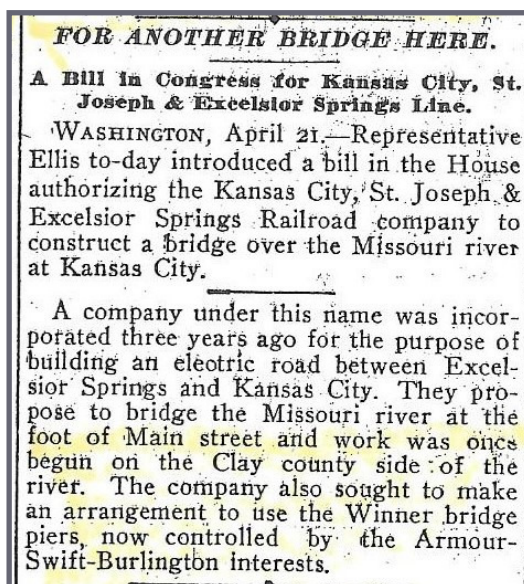
Not only did I believe these were from the Winner Bridge but I repeated the story to my own kids and anyone else that would listen. Nobody ever questioned that legend as far as I know. But fast forward a half dozen decades and now I am reading that the Winner Bridge piers were shortened and reused to build the ASB Bridge. OK, both bridges started from around 10<sup>th</sup> and Burlington in North Kansas City and crossed the Missouri River to downtown KC. But as I recalled the old piers I had seen they were not exactly under the ASB and didn't line up with it either. I started bugging friends who also study these historic things asking them to explain how this could be. We even made trips to see the old pier which still stands on the north side of the river. We looked at old and current maps and Google Earth and found no possible explanations. But it seemed that I alone was unwilling to accept the legend as somehow true despite all evidence to the contrary and move on with my life. I wanted to find a map or diagram showing precisely where the Winner Bridge was and could never find that documentation although there are tons of details about the ASB and those documents all state the Winner piers were reused. For some reason I just couldn't let that question go and from time to time would again bug my friends to explain how this could have been possible when the pier we could see obviously was in the wrong place and pointed the wrong way. It would have landed the bridge on the KC side not at Oak Street but more like Walnut or Main Street. Soon their eyes would glaze over and I would give up talking to them about this personal quest.

Then recently I had my "AHA!" moment. At the Archives I was pouring over our papers in our file on the Winner Bridge for the umpteenth time and spotted the following newspaper Kansas City Star article from 21 April 1906

## ONE BRIDGE TOO MANY? (CONTINUED)

*(Continued from page 3)*

stating there was yet another attempt at building a bridge that occurred after the Winner and before the ASB. It seems the Kansas City, Clay County, and Saint Joseph Rail Road company known locally as the Interurban was granted permission to build a bridge and they wanted to reuse the Winner piers. Problem was that those were now the property of the Armour Swift & Burlington folks who had their own plans to use them. So the Interurban folks immediately began building their own bridge starting on the north side of the river planning to join up with Main Street in KC. Later they reached a deal with the ASB folks and a single bridge was completed for joint use by the electric rail, vehicles and pedestrians on the upper level and steam rail on the lower level draw bridge.



The interurban went out of operation in the early 1930s and the center lanes of the upper deck were converted to much needed additional vehicle lanes. In this century after the Heart of America Bridge was completed the entire upper deck of the ASB was removed. The lower level with its vertical lift draw bridge section still carries rail traffic. Due to lack of barge traffic the drawbridge rarely opens any more. And that big unused stone pier still stands in a parking lot of a warehouse building that once housed RISS trucking or maybe it was PIE. What happened to the barges, RISS and PIE? Those are questions for another day.

So far only that one brief article is all the proof I have found that there was another bridge started and others may question my legend destroying findings, but I am convinced I have solved this riddle and now I can sleep nights.

~Steve Olson  
Archives Volunteer

## ADVENTURES IN RESEARCH THE FIRST STEP

Volunteers stumble upon unusual finds in their preservation of Clay County's historical records. Generally, the first step is "flat-folding", getting the documents in old circuit court records flattened and placed in file folders. When a carton of documents was opened to begin this process, a misshapen bundle had the volunteers stumped. Should it even be touched? After working through the papers with the case, there was no excuse for ignoring the rather eerie package. Opening it revealed an elegant high top, ladies' button shoe from the 1890's. It was Exhibit A in Case #3383\*. A part of the official record, the shoe was retained in the civil case court file. This is not the only unusual find in the records being added to the master index, but it certainly was a departure from the written and typed documents.

Volunteering at the Archives is rewarding and interesting. Put your best foot forward and join the others in exploring the historical records of Clay County. You'll be a "shoe-in" for appreciation!



The 1891 incident in which the shoe played a significant role, involved a woman falling as she got off the street car, with the shoe being caught in the space between the step and the car. This injury occurred in Kansas City, Missouri, and prompted the suit in *Marcella Thompson v. Metropolitan Street Railway Company*. By the time the matter came to a final disposition, it had been in three circuit courts and appealed to the Missouri Supreme Court. Jackson and Livingston Circuit Courts heard motions on the matter before a change of venue moved the case to Clay County Circuit Court. Following a jury finding for the plaintiff with an award of \$5,000, the court set aside the verdict. Upon appeal by the plaintiff, Marcella Thompson, in an 1897 split decision, the Missouri Supreme Court upheld the lower court's order for a new trial. The final outcome of the case is not in the file.

If you are interested in reading the official case, it may be found at the internet link below.

The link is accessible by hovering the mouse over the text, pressing Ctrl on your keyboard and left clicking the mouse.

[\*Thompson v. Metropolitan St. Ry. Co.\* 41S.W. 454 \(Mo. 1897\)](#)

## RECENT DONATIONS

### Donations of Material

Don Frederick (Remarkable Home Repairs) - 1 Framed picture, picture frame; 15 Vol American Heritage War History; Source Records of the Great War

Green County Archives, Springfield, MO—fifteen Atlas Reprints from Southwest MO; plat Books, Land Office Sales Books

Chris Harris—“Highlights of Mt. Memorial Cemetery, Liberty, MO” booklet

Jerre Robertson—Canon CanoScan LIDE 210, Flatbed color image scanner

Ann Turpin—Maps, Abstracts; MO Historical Review

### Donations of Money

Leslie Shiver

#### Microfilm Reader-Printer Fund

Ray Brock

Nancy George

Ann Henning

Patricia Renden

Joyce Schumacher

## WEATHER REMINDER



With winter approaching, please remember to call ahead before making a trip to the Archives on bad weather days.

Our staff is all volunteer, and safety is key for staff and patrons.

## ARCHIVES GIFT SHOP

### ATLASES

Reprint of the 1865 Clay County Historical Atlas, with features in color, just like the original!  
Includes an index. \$22  
1877 Historical Atlas of Clay County \$15  
Every-Name Index to 1877 Atlas \$13

***THE STORY OF LIBERTY***...from settlement to suburb, a movie available in two formats:

DVD—\$17 each

S-VHS—\$12 each

(add \$2 for shipping and handling)

The VHS version is available in two formats, for older model players and for the current model players. Specify which of the formats you desire.

### GREETING CARDS

Note Cards—10 \$7.50

### ***DOCTOR ON THE WESTERN FRONTIER***

The Diaries of Dr. William Wallace Dougherty, 1854-1880 \$17

***LOST VOICES ON THE MISSOURI (Dougherty)***  
\$64.95

### ***IKNEWFRANK...IWISHIHADKNOWNJESSE***

Family, Friends and Neighbors in the Life and Times of the James Boys \$30

### ***GUERRILLAS AND OTHER CURIOSITIES***

Bud, Donnie and Me \$25

### MISCELLANEOUS / BOOKS

Civil War Monuments & Memorials

In Western Missouri \$22

Clay County Births, 1883-84 \$9

Clay County Deaths, 1883-84 \$9

Clay County Historic Map \$15

(not available to be mailed)

Clay Co. Sesquicentennial Souvenir \$30

Early Days in the West \$18

Portraits of a Frontier Community \$25

***DIVIDED LOYALTIES—Civil War Soldiers Buried in Clay County*** \$40

Biographical narratives and genealogical information for more than 800 soldiers and family members. Published to commemorate the 150th anniversary of the Civil War.

***DISCOVERING HISTORIC CLAY COUNTY, MISSOURI*** \$30

Information on more than 1,100 historic sites and points of interest throughout Clay County. Includes photos, descriptions and maps.

Please make your check payable to:

Clay County Archives

And mail to:

P.O. Box 99

Liberty, MO 64069

All prices include mailing fees. If you wish to pick up in person, please contact us for pricing and to ensure availability.

July–September 2015

WE'RE ON THE WEB  
WWW.CLAYCOUNTYARCHIVES.ORG



**Street Address**

210 E. Franklin, Liberty, MO 64068

**Mailing Address**

PO Box 99, Liberty, MO 64069

**Phone**

816-781-3611

Our Mission

To procure, preserve, restore, maintain, study, and promote manuscripts, instruments, records, charters, evidence, and documents of a public or private nature which may have statistical, legal or historical significance to Clay County, Missouri, its government or residents, or such documents as might be desirable to the association and to encourage public interest therein.