

The Clay County MOsaic

“Fitting the Pieces Together”

P R E S I D E N T ’ S M E S S A G E

INSIDE THIS ISSUE:

Info	2
Books	3
Donations Trivia Night	5
CHARISMA	6
Walking Tours	6
Archives Info	7

We would love to hear from you!

Is there a Clay County topic you've always wondered about?

Send us a question and we'll try to provide you an answer!

2014 is well on its way. Time doesn't seem to stop or even slow down. I wonder how long it will be until we join the annals of history. Hopefully, we will all have ample time to make our mark.

I met with Art Homer and David Ebert of the North Kansas City Historical Society in January. We talked about our two organizations and how we might be able to help each other in the future. For those of you with an interest in "Northtown", their website is www.nkchistoricalociety.com.

Speaking of sister organizations, CHARISMA (the association of northland museums and archives) will hold our first Teachers Fair in July. We will present our constituent organizations to area teachers so they will know of the resources we can provide to their students in areas of local history. The various organizations could provide on-site field trips, in-classroom programs, etc. Later in the

fall, we will participate in the established Teachers Fairs for the North Kansas City School District and the Liberty School District.



We are on page 8 of the 2014 edition of Explore Liberty magazine which was distributed in the Liberty Tribune newspaper in March. It is published by the Tribune, Historic Downtown Liberty Inc and the City of Liberty. It celebrates Liberty's history, heritage, culture and other civic amenities. You can also find it on the web at:

www.explorelibertymo.com

We are working on some more books which we hope to publish this year and next. One is a compendium of Clay County historic sites replete with maps, images, locations,

descriptions and other important information. The other book will be about Clay County criminal cases during the Civil War. Some of the events and violence of the era was brought before the court which will be published in book form for the first time. And it will give you a glimpse of life during that period from the perspective of the justice system.

Shirley Fansher generously donated a new set of three wireless telephones instead of the mismatched, less-reliable phones we did have. We are now adequately covered in the lobby, the East Room and the West Room. Thanks, Shirley!

And thanks to all who have paid your dues for 2014. It allows us to continue in our mission to gather, preserve, index and make available the collection of historical material.

~Stuart Elliott

2014 Executive Board

Officers

President	Stuart Elliott
1st Vice President	Steve Olson
2nd Vice President	Shirley Fansher
Corresponding Secretary	Ann Henning
Recording Secretary	Donna Root
Treasurer	Scott R. Cole

Directors

<u>Through 2014</u>	<u>Through 2015</u>	<u>Through 2016</u>
Ward Brown	Raymond Brock	Patricia Rendon
Joyce Schumacher	Bob Corum	Nancy George

Committee Chairs

Records Use & Preservation	Carol Olson
Membership	Shirley Fansher
Properties	Steve Olson & Bob Corum
Cemeteries	Ken Neth
Computer Use	Stuart Elliott
Volunteer Coordinator	Carol Olson
Ways & Means	Steve Olson

Organizational Representatives

Clay County Parks	Emily Vandendaele
William C. Corum Chapter SAR	Frank McMillian
Clay Co. Patriots Chapter DAR	Lois Long
Alexander Doniphan Chapter DAR	Jerre Robertson
City of Liberty	Jonna Wensel

Newsletter Staff

Keenan Glidewell Barker
Stuart Elliott
Shirley Fansher

General Information

Hours of Operation

Monday through Wednesday—9 a.m. to 4 p.m.
First Wednesday of Month—6:30 p.m. to 9 p.m.
Closed on National Holidays

Membership for Calendar Year

Individual & Family (one address) - \$15.00
(Memberships paid after October 1 will apply to next calendar year.)

Benefits of Membership

Unlimited *On-Site* Research
Subscription to *The Clay County MOsaic*, our quarterly newsletter

Research Policy & Fees

Non-members pay \$5.00 per day for on-site research.
Member and non-member research requests by mail are accepted. Each request must be accompanied by a self-addressed stamped envelope and an initial research fee of \$10.00 per surname for one hour of research. Additional hours are \$10.00 per hour.

Copy Prices

Original records (such as probate material)	\$1/page
Other published material (b&w)	25 cents per page
Other published material (color)	75 cents per page
Microfilm printouts	25 cents per page
Computer print-outs	5 cents per page
Oversize copies	50 cents per page
Photographs	
Standard Quality	50 cents
Archival Quality	\$5.00

Personal imaging will be charged at the above rates.

MOsaic by Internet

If you would like to receive your future newsletters via email, please forward your email address to: MOsaic@claycountyarchives.org

ARCHIVES TO PUBLISH HISTORIC SITES BOOK

A new project is underway at the Archives. The *Clay County Historic Sites* book project is building on and adding to research that was previously completed in conjunction with the Clay County Gazetteer and Historic Sites Map projects. The Historic Sites Map (in 38" by 42" format) is currently available for purchase at the Archives. A guide book, that was written as a companion to the map, was never published... until now!

The goal of the *Clay County Historic Sites* book project is to combine the existing Historic Sites Map and descriptive information from the Historic Sites Guide Book into a single publication to be sold by the Archives. The original map is being reformatted into page sized segments for the new book. Descriptions for the sites and points of interest on the map are being enhanced to include related images from the Archive's photo collection. Township, Range and Section location information will be included. Global Positioning System (GPS) coordinates will also be provided for many of the sites.

The book will provide a treasure trove of information and should appeal to just about anyone who is interested in Clay County History. The map and descriptions will highlight more than 1,100 historic sites and points of interest. Information on individuals, families, homes, schools, churches, communities, roads, bridges, railroads, mills, springs, streams, rivers, ferries, landings and more will be included.

Good progress is being made on the new book. More than 350 photos have been selected, GPS coordinates have been gathered and the descriptive write-ups are currently being edited.

Included on the next page is a sample of three of the historic site descriptions that will be included in the book. (Note: Within the descriptions, Township, Range and Section information is abbreviated in the following format: T51R32S25.)

A sample portion of the Historic Sites Map will be included in our next MOsaic newsletter update.

If all goes as planned, we are hoping that the book will be available later this year.

~ *Written by Tony Meyers*
Archives Volunteer

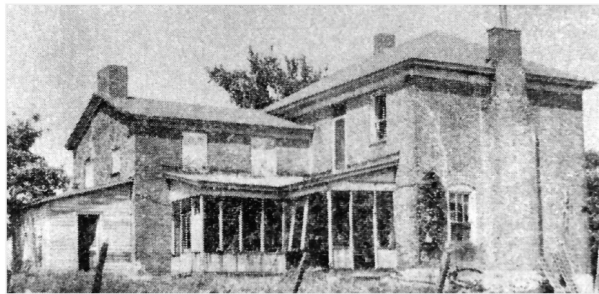


Another project under construction!

S A M P L E P A G E

Arthur (Michael) Home was located in T51 R32 S25. This spacious mansion was built in the 1830s. Mr. Arthur was known for his hospitality. The home was furnished with the finest furniture and china. Mr. Arthur was a wealthy farmer, insurance man, owner of warehouses and hemp factories. After the Civil War he moved into Liberty.

- *Location: Southwest Clay County Map C18*
- *Approx. GPS Coords: 39.2048960, -94.4473780*



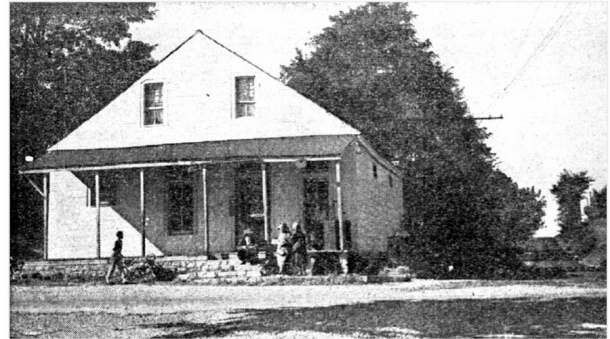
Michael Arthur Plantation Home



Michael Arthur's Home on Franklin Street in Liberty

Barry was a town in T51 R33 S10 in Gallatin Township. It was located on the Clay/Platte County line. This community began in the early 1820s as an Indian trading post. In 1834 a post office was established there and was given the name Barry after Postmaster General William T. Barry. The town was situated on the western edge of the United States for 15 years. It was used as a way station on the Military Road and a wagon stop on the St. Louis to Weston mail route. Early settlers included Glenn Burnett, Thomas Chevis, Dan Carpenter and Joseph Gash. The town did not incorporate.

- *Location: Southwest Clay County Map C13*
- *Approx. GPS Coords: 39.2460390, -94.5989064*



Barry General Store

Barry Indian Trading Post was located in T51 R33 S10 on the western boundary of the United States. No original documentation has been found confirming that it was used for trade with Native Americans, however several history books record this as fact. They also state that the trading post opened in 1830, however in Peter Burnett's book "Recollections of an Old Pioneer" he noted that his brother Glen O. Burnett established the trading post along with a steam sawmill and distillery in 1835. Records do show that Glen sold his trading house and smoke house in 1839 and his remaining land in Barry containing the sawmill and distillery in 1840, to Porter Fleming. Mr. Fleming in turn sold it all to Thomas M. Chevis. Mr. Chevis operated the trading post until 1859. The building was moved from Barry to Missouri Town 1855.

- *Location: Southwest Clay County Map C13*
- *Approx. GPS Coords: 39.2460886, -94.6006336*



*Barry Trading Post
Reconstructed at Missouri Town 1855*

RECENT DONATIONS

Donations of Material

Jack Wymore—Aerial photo of Liberty Aresnal area; 1924 Picture of Liberty Boy Scout Troop; Merchant Ledger with name index 1837-1838; Merchant 1832; Liberty Ladies College Economy Cook Book 1903; Liberty High School Class Program, Midsummer Night's Dream-1915; Liberty Public Schools Commencement-1936.

Frances Hornbuckle—1946 & 1947 NKC Yearbooks, The Owl and the graduation announcements for Roy Hornbuckle, the 20th Reunion announcement, picture and program booklet, the 50th Reunion picture and the program booklet with a list of names and addresses of the group, 60th Reunion picture and names list.

Donations of Money

Mark Kelly
Robert & Cheryl Steincamp

Thank you for your support!

TRIVIA NIGHT SUCCESS WE CAME IN SECOND!



The Archives team made up of: Scott & Ann Cole, Steve & Carol Olson, Shirley Fansher and for a short time Chris Harris took second place in the Clay County Museum 2nd Annual Trivia Contest. We did however take 1st place in four of the eight categories getting a bag of goodies for our table with each of those wins. We went home with Cherry Mash candy, bubbles, t-shirts and eight vinyl record albums. Since none of us even had a turntable we gave those away. When there was a table tie, we depended on Scott as our rep for those tie-breaker questions and he won all of them. Bravo, Scott.

We had a great time, snacks were provided along with desserts made by Museum members (they cook almost as well as our members).

Please think about joining in the fun next year.

~ Carol Olson
Archives Member

CHARISMA IS REACHING OUT TO NORTHLAND SCHOOLS

As part of our ongoing efforts to promote awareness of our area museums, archives and historic sites, CHARISMA is investigating participating in the teachers' resource fairs held by Liberty and North Kansas City School Districts. By presenting the benefits of working with local organizations to enhance education and demonstrating our interest in assisting teachers with class programs, we hope to raise awareness of what is available locally, increase attendance, and possibly recruit new volunteers for each site.

Our own CHARISMA Teachers Fair has been scheduled for July 31, 2014 from 5:00 - 8:00 pm at the Clay-Ray Veterans Association in Excelsior Springs. We are in the process of compiling information for each participating organization, planning for refreshments and inviting the teachers from Northland schools not in the Liberty or North Kansas City districts. If you would like to help, be invited, or have suggestions, please let us know!

~Carol Rudi
Archives Member



LIBERTY 2014 WALKING TOURS

10:00 AM - OPEN TO THE PUBLIC - FREE

Saturday, July 12

Three Downtown Churches

Tour meets at the
Presbyterian Church,
corner of North Main and
Mississippi Streets

Saturday, August 2

Jewell & Lightburne Historic Districts

Tour meets at the parking lot at the corner of Franklin
and
Lightburne Streets

Saturday, September 13

Dougherty Historic District

Tour meets at Rotary Park,
corner of Franklin and
Gallatin Streets

Saturday, October 4

Mt. Memorial Cemetery

Tour meets at the entrance
to the cemetery.
(Enter William Jewell College campus from
Miller Street and continue up the hill.)

Contact the City of Liberty, MO for more information at 816-439-4400

**ARCHIVES
GIFT SHOP**

ATLAS

Reprint of the 1865 Clay County Historical Atlas, with features in color, just like the original!
Includes an index. \$22

THE STORY OF LIBERTY...from settlement to suburb, a movie available in two formats:
DVD—\$15 each
S-VHS—\$10 each
(add \$2 for shipping and handling)
The VHS version is available in two formats, for older model players and for the current model players. Specify which of the formats you desire.

GREETING CARDS

Note Cards—10 (historic homes or holiday) \$7.50

DOCTOR ON THE WESTERN FRONTIER
The Diaries of Dr. William Wallace Dougherty, 1854-1880 \$17

LOST VOICES ON THE MISSOURI

***IKNEWFRANK...IWISHIHADKNOWN
JESSE***

Family, Friends and Neighbors in the Life and Times of the James Boys \$30

GUERRILLAS AND OTHER CURIOSITIES

Bud, Donnie and Me \$25

MISCELLANEOUS / BOOKS

1877 Historical Atlas of Clay County	\$15
Every-Name Index to 1877 Atlas	\$13
Clay County Births, 1883-84	\$9
Clay County Deaths, 1883-84	\$9
Divided Loyalties	\$35
Clay County Historic Map (not available to be mailed)	\$15
DAR Sesquicentennial Book	\$18
	SOLD OUT
Every-Name Index to DAR Book	\$11

Please make your check payable to:
Clay County Archives
And mail to:
P.O. Box 99
Liberty, MO 64069

All prices include mailing fees. If you wish to pick up in person,
please contact us for pricing and to ensure availability.

Jan, Feb, March 2014

WE'RE ON THE WEB
WWW.CLAYCOUNTYARCHIVES.ORG



Street Address

210 E. Franklin, Liberty, MO 64068

Mailing Address

PO Box 99, Liberty, MO 64069

Phone

816-781-3611

Our Mission

To procure, preserve, restore, maintain, study, and promote manuscripts, instruments, records, charters, evidence, and documents of a public or private nature which may have statistical, legal or historical significance to Clay County, Missouri, its government or residents, or such documents as might be desirable to the association and to encourage public interest therein.